



IASCO

CONE SPLITTER

TECHNOLOGY FOR HEROES.

STRUCTURE AND ADVANTAGES OF OUR CONE SPLITTERS..

- + affordable entry-level models such as Ecosplit and LASplit D1
- + large product series - suitable for all carrier vehicles
- + durable and maintains value due to two oppositely installed tapered roller bearings
- + nearly maintenance-free
- + easy connection to the carrier vehicle (no leak oil line necessary)
- + weight reduction through special cone casting shapes
- + already over 10,000 customers

+ universal mounting flange plate compatible with all excavator mounts

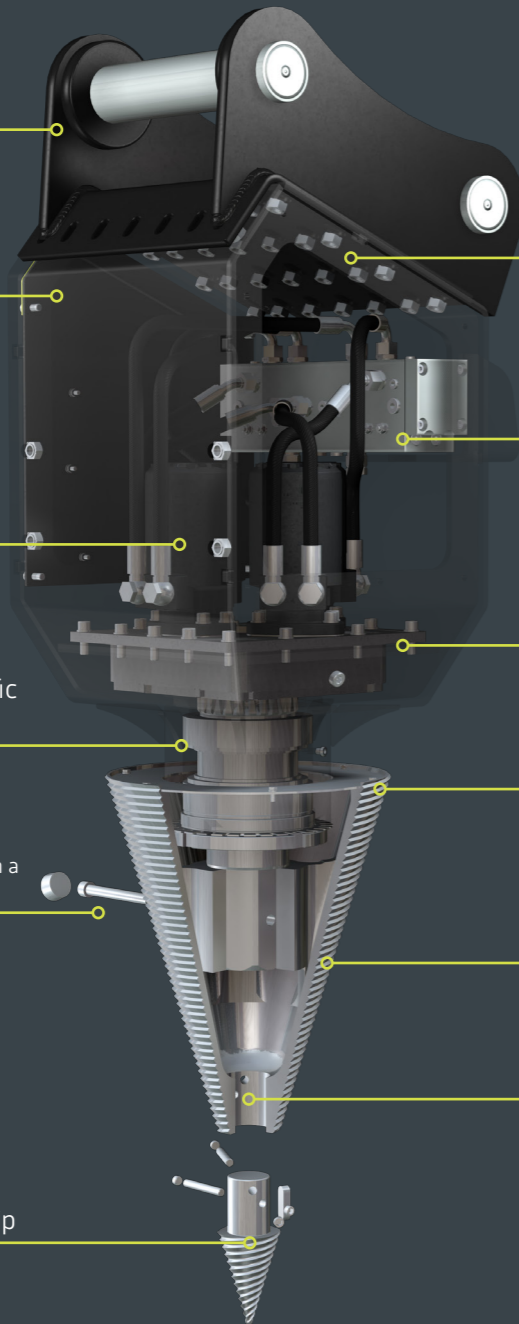
+ Extremely robust design offers maximum protection due to solid body

+ High-performance brand motors with increased longevity ensure high torque.

+ drive shaft tailored to the specific application area

+ Multiple benefits from LASCO attachments, quickly exchanged through a quick-change system.

+ hardened and replaceable cone tip



+ simple connection (forward/reverse), no leak oil line necessary

+ Additional performance optimization through distributor or valve block. Switching time adjustable from the outside.

+ even stronger due to reduced gear transmission. Professionals shift into second gear.

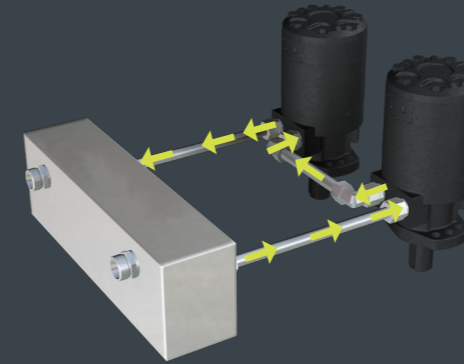
+ Cone diameter tailored to the application.

+ High splitting performance through enhanced performance, threaded paths, and optimized pitch of our unique splitting cone.

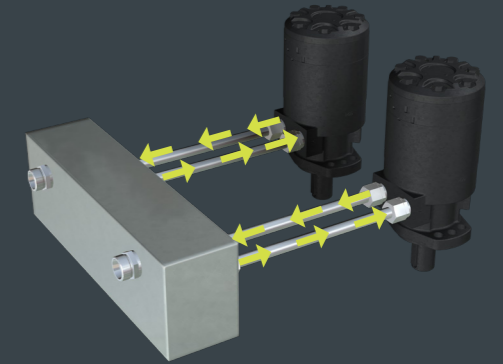
+ Significant weight reduction through cone casting shapes

OILWAYOPTIMIZED - FOR HIGH SPLITTING PERFORMANCE BECAUSE TORQUE ALONE IS NOT ENOUGH FOR US.

serial oil flow (simplified representation)



parallel oil flow (simplified representation)



From the D2 model series onwards, the oil flow of the LASCO cone splitters is optimized for the carrier devices used.

DISTRIBUTOR BLOCK (parallel oil flow):

In the distributor block, the oil flow is switched to parallel. The splitting performance is always equally fast and powerful. This variant is particularly gentle on the motor at high flow rates of the carrier device.

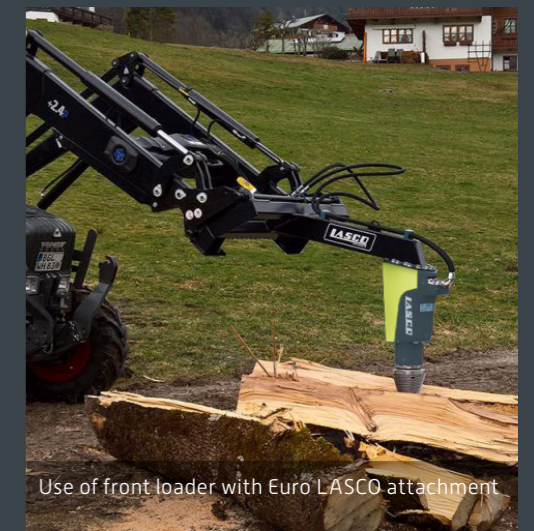
VALVE BLOCK (serial & parallel oil flow):

The valve block offers maximum splitting speed even at low flow rates of the carrier device. The splitting process starts in fast mode (oil flow switched serially). Under high load, the valve block switches to parallel operation. Thus, the valve block can switch the oil flow both serially and parallelly.

ADDITIONAL BENEFITS & APPLICATIONS



Splitting and handling in a single work process

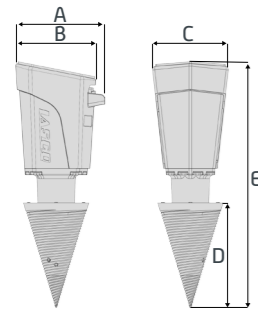


Use of front loader with Euro LASCO attachment

LASCO CONE SPLITTER

Large model range // over 10,000 satisfied customers // unique splitting performance

DIMENSIONS



LEGEND		
D1	10	21
Number of engines	Engine type	Cone diameter [cm]

EcoSplit



D1.10.21



A	241
B	201
C	180
D	368
E	810

A	375
B	335
C	319
D	365
E	960

D1.47.21 // D1.52.21 // D1.62.21



D1.10.28



A	362
B	326
C	308
D	343
E	864

A	375
B	335
C	319
D	440
E	1035

D1.52.28 // D1.62.28



D2.52.28 // D2.62.28



A	438
B	350
C	353
D	462
E	1073

A	438
B	350
C	353
D	462
E	1073

D2.52.40 // D2.62.40 D3.52.40 // D3.62.40



D4.52.40 // D4.62.40



A	578
B	478
C	465
D	641
E	1395

A	562
B	429
C	473
D	641
E	1453

D4.52.60 // D4.62.60



A	562
B	429
C	473
D	1062
E	1848

Type	Art-Nr.	Wood lengths (cm)	Wood diameter (cm)	Service weight (t)	Engine type	Oil quantity (l/min)	max. pressure	Weight
EcoSplit	117486	150 cm	50 cm	1,3-5,0 t.	47 Eco	20-70 l/min	170-190 bar	80 kg
D1.47.21	117532	200 cm	70 cm	1,3-5,0 t.	47	20-70 l/min	170-200 bar	80 kg
D1.52.21	117533	200 cm	70 cm	1,3-5,0 t.	52	20- 80 l/min	200-270 bar	80 kg
D1.62.21	117534	200 cm	70 cm	1,3-5,0 t.	62	30- 80 l/min	170-220 bar	80 kg
D1.10.21	117535	300 cm	90 cm	2,0-8,0 t.	10	40-150 l/min	170-200 bar	120 kg
D1.10.28	117536	300 cm	100 cm	2,0-7,0 t.	10	40-150 l/min	170-200 bar	130 kg
D1.52.28	133986	300 cm	90 cm	2,0-7,0 t.	52	30- 80 l/min	170-270 bar	135 kg
D1.62.28	133987	300 cm	90 cm	2,0-7,0 t.	62	30- 80 l/min	170-200 bar	135 kg

Type	Art-Nr.	Wood lengths (cm)	Wood diameter (cm)	Service weight (t)	Engine type	Oil quantity (l/min)	max. pressure	Weight
D2.52.28	133988 ¹ 133989 ²	400 cm	90 cm	3,0-8,0 t.	52	50-150 l/min ¹ 50-80 l/min ²	200-270 bar	135 kg
D2.62.28	133990 ¹ 133991 ²	400 cm	90 cm	3,0-8,0 t.	62	50-150 l/min ¹ 50-80 l/min ²	170-220 bar	135 kg
D2.52.40	130705 ¹ 130706 ²	500 cm	110 cm	5,0-15,0 t.	52	80-180 l/min ¹ 80-180 l/min ²	200-270 bar	400 kg
D2.62.40	130707 ¹ 130708 ²	500 cm	110 cm	5,0-15,0 t.	62	80-180 l/min ¹ 80-180 l/min ²	170-220 bar	400 kg
D3.52.40	130709 ¹ 130710 ²	500 cm	150 cm	7,0-19,0 t.	52	90-220 l/min ¹ 90-120 l/min ²	200-270 bar	400 kg
D3.62.40	130711 ¹ 130712 ²	500 cm	150 cm	7,0-19,0 t.	62	90-220 l/min ¹ 90-120 l/min ²	170-220 bar	400 kg
D4.52.40	130575 ¹ 130662 ²	700 cm	200 cm	10-25 t.	52	120-300 l/min ¹ 120-300 l/min ²	200-270 bar	600 kg
D4.62.40	130658 ¹ 130670 ²	700 cm	200 cm	10-25 t.	62	120-300 l/min ¹ 120-300 l/min ²	170-220 bar	600 kg
D4.52.60	130739 ¹ 130742 ²	700 cm	200 cm	10-25 t.	52	120-300 l/min ¹ 120-300 l/min ²	200-270 bar	600 kg
D4.62.60	130740 ¹ 130743 ²	700 cm	200 cm	10-25 t.	62	120-300 l/min ¹ 120-300 l/min ²	170-220 bar	600 kg



Phone: 021 496 599
Email: info@forestquip.co.nz
www.forestquip.co.nz